



2015 NRRTS

WEBINARS



This unique educational opportunity is designed with three criteria in mind: to provide quality continuing education in seating and wheeled mobility; to meet the annual CEU requirement* for ATP renewal and NRRTS Registration; and to provide this programming in a cost-effective manner.

The faculty members are among the most well-known and talented people in our industry and profession. They will present information and answer questions from participants. Prior to each session, the presenter's PowerPoint presentation and other course material will be sent via email to registered participants.

The University of Pittsburgh, School of Health and Rehabilitation Sciences, Department of Rehabilitation Science and Technology Continuing Education (RSTCE), is certifying the educational contact hours of this program and by doing so is in no way endorsing any specific content, company or product. The information presented in this program may represent only a sample of appropriate interventions. Each person should claim only those hours of credit that he or she actually spent in the educational activity.

Audience: CRTSs, RRTSs, other ATPs, and physical and occupational therapists (intermediate to advanced)

REGISTRATION FEES

NRRTS REGISTRANTS - \$0

FRIENDS OF NRRTS - \$20

ALL OTHERS - \$40

Long distance charges may apply, .1 CEU has been applied for, and NO REFUNDS will be given.

*NRRTS as well as the RESNA Professional Standards Board recognizes the International Association for Continuing Education and Training (IACET) as an international standard of quality. Though the words Continuing Education Unit (CEU) are not exclusive to IACET, only CEUs from an IACET authorized provider or accredited college or university, such as the University of Pittsburgh, are accepted as CEUs for NRRTS or RESNA recertification renewal.

FOR MORE INFORMATION, PLEASE VISIT

WWW.NRRTS.ORG/WEBINARS

All participants must score a 70% on the post-test assessment to receive CEU credits.

TUESDAY, FEBRUARY 17, 2015 | 7PM - 8PM (ET)

Prop Sitters: Who, What, Where and When!

JILL SPARACIO, OTR/L, ATP/SMS, ABDA, MEMBER OF CTF



Seating individuals who lack the intrinsic muscle strength and control for active sitting present with certain challenges. The seating evaluation is key in determining what, where and why a type of external support is needed. Although neutral alignment should be key, the focus has to remain on function, often resulting in compromise. This webinar will identify characteristics that may result in the need for total support, the evaluation process and the process of generating specific recommendations for these individuals.

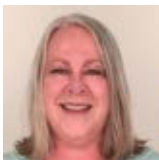
Jill Sparacio is an occupational therapist in private practice in the Chicago area. A graduate of Western Michigan University, she currently provides occupational therapy services to children and adults with intellectual disabilities and medical fragility. Included in her consultation is a specialty in seating and wheeled mobility. Sparacio consults with seating manufacturers, often presenting clinical applications of seating and wheeled mobility products in addition to work on product development and design. She is the clinical educator for Pindot, a division of Invacare and is a member of the Clinical Task Force and has been actively involved in funding and delivery issues on the state and national levels. Sparacio presents at seating and wheeled mobility conferences throughout North America as well as internationally. She has more than 30 years of experience as an occupational therapist.

WEDNESDAY, FEBRUARY 18, 2015 | 11AM - 12PM (ET)

Growing Evidence in Support of Orthotic-Based Seating Interventions

SPONSORED BY RIDE DESIGNS

JOAN PADGITT, PT, ATP



Wheelchair seating based on orthotic science has been successfully used to protect skin, improve stability, and manage heat and moisture. These successes have been reported through anecdotal experience and case studies. This webinar will summarize several recent studies comprising a body of evidence on how orthotic-based seating addresses sitting stability, microclimate, skin integrity and deep tissue deformation. The data collected includes the Modified Functional Reach Test, Interface Pressure Mapping and MRI studies on orthotic-based seating compared to an immersive air floatation wheelchair cushion. Preliminary human tester microclimate data using specially adapted temperature sensors will also be presented.

Joan Padgitt has specialized in wheeled seating and mobility since 1987 when she established the wheelchair clinic at Marianjoy Rehab Center in Wheaton, Ill. Padgitt joined Rick Jay's team at Jay Medical in Boulder, Colo., in 1989 where she was the director of educational programs. She has consulted and educated others on wheeled seating and mobility domestically and internationally with Jay Medical, Sunrise Medical, Flotech Medical and Aspen Seating/

Ride Designs. In 2007, Padgitt re-entered the clinical world as a practitioner with the Denver VA Wheelchair team. She is now back with the Ride Designs team directing the sales and education of this unique and innovative line of wheelchair seating interfaces.

THURSDAY, FEBRUARY 19, 2015 | 5PM - 6PM (ET)

Seating and Mobility Considerations for Persons with Multiple Sclerosis

BARBARA CRANE, PHD, PT, ATP/SMS, MEMBER OF CTF



Multiple sclerosis (MS) is a progressive neurological condition that poses many challenges in the provision of wheeled mobility and seating solutions. Sequela of MS include: muscle weakness, abnormalities in muscle tone, movement control disorders, and postural control problems. The resulting intricacy of client presentation increases the complexity of seating and mobility requirements for this population. MS is also characterized by fluctuations in severity and an unpredictable course of progression. This makes meeting current needs and anticipating future needs more difficult as well. This webinar will focus on potential seating and mobility solutions for this challenging population.

Barbara Crane is an associate professor of physical therapy at the University of Hartford in West Hartford, Conn. She has a BS in Physical Therapy from the University of Connecticut, in Storrs, Conn.; a MA in Gerontology from the University of Saint Joseph, West Hartford, Conn.; and a PhD in Rehabilitation Science and Technology from the University of Pittsburgh. A RESNA certified ATP and SMS, Crane has more than 20 years of clinical experience and has lectured extensively at national and international conferences.

TUESDAY, MARCH 24, 2015 | 7PM - 8PM (ET)

Approaching the Wheelchair Evaluation from all Angles: Roles and Responsibilities of the Team

LOIS BROWN, MPT, ATP/SMS



Having filled the roles of prescribing therapist, manufacturer, clinical educator and as an ATP working for an equipment supplier, Lois Brown has a unique perspective on the practice of wheelchair prescription and how the roles of the team vary but must compliment and support one another. This webinar will use case examples and best practice guidelines to highlight these roles and an integrated problem-solving approach that leads to successful client outcomes.

Brown, MPT, ATP/SMS, is a physical therapist with 22 years of experience including more than five years of hands-on practice and full-time clinical education. Brown has presented nationally and internationally on wheeled mobility and seating and assistive technology, including ISS, ESS, CSMC and RESNA. She has been published in a variety of rehab publications and is considered an expert in her field.

WEDNESDAY, MARCH 25, 2015 | 11AM - 12PM (ET)

Gotcha! Key Considerations Before Providing a PMD to a Medicare Beneficiary

SPONSORED BY QUANTUM REHAB

JULIE PIRIANO, PT, ATP/SMS, MEMBER OF CTF



This course will examine the laws, rules and regulations that govern the provision of a power mobility device, the submission of a clean claim and accepting reimbursement from the Medicare Trust Fund. Included will be common claim denial scenarios related to the seven element order and product description, time frame issues, and home assessment requirements.

Julie Piriano, PT, ATP/SMS, is the director of Rehab Industry Affairs for Pride/Quantum Rehab and is actively involved with legislative and regulatory issues that impact Complex Rehab Technology. She serves on the RESNA board of directors, has served on the PSB, and is an active participant in the Wheeled Mobility and Seating SIG and the PT PSG. Piriano is a Friend of NRRTS, member of AAHomecare's Complex Rehab and Mobility Council, and NCART's Medicaid Committee. She also serves on the board of directors for several state associations and is a member of the four DME MAC Advisory Councils.

THURSDAY, MARCH 26, 2015 | 5PM - 6PM (ET)

Clinical Documentation

BARBARA CRUME, PT, ATP, MEMBER OF CTF



Correct coding and documentation for therapy reimbursement is critical to the success of any outpatient clinic or home health provider. This course will provide information on Current Procedural Terminology (CPT) and how to use certain codes for wheelchair seating and mobility services. Documentation of the evaluation and treatment interventions will be presented through case examples and the use of templates to demonstrate provision of skilled care. This will include ways to justify the need for the assistive technology recommended. For those patients on Medicare, the use of G-codes will be included.

Barbara Crume, PT, ATP, works full time as a seating and mobility specialist with CarePartners Health Services in Asheville, North Carolina. She has more than 30 years of experience working with clients of all ages and all diagnoses to obtain manual and power wheelchairs with custom seating. She has presented courses at numerous conferences including ISS, RESNA, Medtrade and APTA. Crume has been an active member of the RESNA CPT Code Work Group, Standards Committee on Tissue Integrity and the Professional Standards Board. She served for four years as an executive board member on the Clinician Task Force.

TUESDAY, APRIL 14, 2015 | 7PM - 8PM (ET)

Ethics, Part 1: Moving through Specific Scenarios

WEESIE WALKER, ATP/SMS



This webinar presented by NRRTS executive director will provide an overview of the NRRTS Code of Ethics and Standards of Practice. Participants will learn about the NRRTS complaint procedure. Examples of how to apply these standards in everyday situations will also be presented.

Weesie Walker was an RTS for more than 30 years. She has served on the board of directors for NRRTS and GAMES as well as RESNA's Professional Standards board. She has presented at the International Seating Symposium, National Seating and Mobility Symposium, Georgia AMES, American Occupational Therapy Association conference, and Canadian Seating and Mobility Conference.

THURSDAY, APRIL 16, 2015 | 7PM - 8PM (ET)

Ethics, Part 2: Overview of the Code of Ethics and Standards of Practice

WEESIE WALKER, ATP/SMS



This webinar will discuss ethics using specific examples from everyday practice. Ethics and standards of practice affect our industry. It is critical that we all understand the consequences and implications of malpractice.

Weesie Walker was an RTS for more than 30 years. She has served on the board of directors for NRRTS and GAMES as well as RESNA's Professional Standards board. She has presented at the International Seating Symposium, National Seating and Mobility Symposium, Georgia AMES, American Occupational Therapy Association conference, and Canadian Seating and Mobility Conference. Walker is currently the executive Director of NRRTS.

TUESDAY, MAY 19, 2015 | 7PM - 8PM (ET)

Business Practices: How to Cope with the Changing Environment

GREG A. PACKER



This session will focus on current changes in the market associated with the Home Medical Equipment and Rehab industry. If you have watched the current reimbursement trends reduce your profits, this course will help you understand the incremental dollars that are in our market. The

coming storm has positioned a more complete client experience through trusted providers of products and services. You must move your business to the next level by developing new and emerging profit centers. We will review new areas of profit and process enhancement needed to stay competitive.

Greg A. Packer is president of U.S. Rehab, VGM Group Inc.'s alliance for high-tech rehab providers. His background, which includes sales management for Pride Mobility Products Corp. and Biocore Medical Technologies Inc., provides him with an understanding of the sales and product areas of rehabilitation technology. Additionally, he served three terms in the Kansas House of Representatives, so is familiar with the regulatory and governmental issues facing the Rehab and Home Medical Equipment industries. A graduate of Iowa State University in Ames, Iowa, he received his master of business administration degree from Baker University in Baldwin City, Kan.

WEDNESDAY, MAY 20, 2015 | 11AM - 12PM (ET)

Teenage Transitions

ANDRINA SABET, PT, ATP



Teenage years can be challenging under any circumstances. Add in the complications of a motor impairment and that challenge rises to new heights. Plans and pathways in adolescents are often shifting towards a more independent lifestyle. Mobility choices during this time are not only part

of the success or failure of an adolescent's ability to achieve his or her goals, but also at times might influence the goals themselves. This webinar will utilize case studies and evidence from the literature to highlight the multiple factors that require consideration to optimize wheelchair prescription in this unique population.

Andrina Sabet is a physical therapist at Cleveland Clinic Children's Hospital for Rehabilitation in Cleveland, Ohio. Her clinical practice includes infants in the NICU and toddlers through young adults in the Seating and Mobility Clinic. Sabet was a coauthor on the RESNA Position Paper for Pediatric Power Wheelchairs and is active within RESNA as chair of the Wheeled Mobility SIG. She has presented locally and nationally on positioning and mobility and frequently collaborates with manufacturers regarding product development.

THURSDAY, MAY 21, 2015 | 5PM - 6PM (ET)

Pediatric Power Mobility: Developing and Determining Readiness

MICHELLE L. LANGE, OTR/L, ABDA, ATP/SMS



When recommending a power wheelchair, a number of features must be considered, such as driving method, seating and drive wheel configuration. However, we first need to determine if the client is truly ready for a power wheelchair and, if not, develop readiness. This webinar will present

strategies to determine and develop readiness.

Michelle L. OTR/L, ABDA, ATP/SMS, is an occupational therapist with 25 years of experience and former clinical director of The Assistive Technology Clinics of The Children's Hospital of Denver. She is a well-respected lecturer, both nationally and internationally and has written four book chapters and nearly 200 articles. She is the editor of "Fundamentals in Assistive Technology, 4th ed." and clinical editor of NRRTS, "DIRECTIONS" magazine. Lange is on the teaching faculty of RESNA. She is on the RERC on Wheeled Mobility Advisory Board. Lange is a credentialed ATP and SMS and is a senior disability analyst of the ABDA.

TUESDAY, JUNE 16, 2015 | 7PM - 8PM (ET)

Power Wheelchair Access: Switch Assessment

SPONSORED BY STEALTH PRODUCTS

MICHELLE L. LANGE, OTR/L, ABDA, ATP/SMS



Power wheelchairs can be accessed by joystick or alternative access methods. Most of these alternative methods are switches. This webinar will present assessment strategies to determine the optimal switch location and switch type to provide access. A switch site hierarchy will be presented along with clinical indicators for a variety of potential switch locations. A wide array of mechanical and electrical switches will also be discussed.

Michelle L. OTR/L, ABDA, ATP/SMS, is an occupational therapist with 25 years of experience and former clinical director of The Assistive Technology Clinics of The Children's Hospital of Denver. She is a well-respected lecturer, both nationally and internationally and has written four book chapters and nearly 200 articles. She is the editor of "Fundamentals in Assistive Technology, 4th ed." and clinical director of NRRTS, "DIRECTIONS" magazine. Lange is on the teaching faculty of RESNA. She is on the RERC on Wheeled Mobility Advisory Board. Lange is a credentialed ATP and SMS and is a senior disability analyst of the ABDA.

THURSDAY, JUNE 18, 2015 | 5PM - 6:PM (ET)

Spinal Cord Injury: Balancing Pressure Relief and Postural Support

ANGELA DILLBECK REGIER, OTD, OTR/L, ATP



For individuals with SCI, adequate postural support serves as a foundation for participation in functional activities. Without appropriate support, function and posture often become compromised. Due to the limited mobility and lack of sensation that often accompanies SCI, pressure relief is an equally important consideration. This course will review properties and application of primary and secondary support surfaces with the goal of promoting optimal postural alignment while maximizing support surface contact in order to prevent peak pressure areas and reduce risk of skin breakdown. Application of powered seating functions and client education strategies will also be discussed.

Angela Regier, OTD, OTR/L, ATP, is an occupational therapist with a clinical doctorate from Creighton University in Omaha, Neb., and is a RESNA-certified ATP. Her career has focused on spinal cord injury rehabilitation in inpatient and outpatient settings. She is currently supervisor of the Wheelchair Seating and Mobility Clinic at Craig Hospital in Englewood, Colo. She provides comprehensive seating and mobility intervention for individuals with traumatic brain and spinal cord injury. Regier has published on the topic of seating and mobility for acquired brain injury and spinal cord injury.

TUESDAY, JULY 21, 2015 | 7PM TO 8PM (ET)

“Seeing” Positioning from a Different Angle: Functional Vision Considerations in Seating and Positioning

KATHERINE L. CLARK, MOT, OTR/L, AND ERIN M. POPE, PT, MPT



Functional vision plays a crucial role in successful set up and use of adaptive equipment for seating, positioning, and mobility. Visual assessment is a key component of the

equipment evaluation, particularly for patients with a history of neurological impairment and/or complex physical needs. Given the high incidence of cortical visual impairment (CVI) and visual processing delays among this population, understanding functional vision can dramatically alter the set up of positioning systems. It is crucial that evaluators recognize characteristic behaviors of CVI. Modifications, supports and set up considerations can result in significant changes in a patient’s ability to tolerate and function within a positioning system.

Katherine Clark MOT, OTR/L, is a lead occupational therapist at the Perlman Center at Cincinnati Children’s Hospital Medical. The Perlman Center is a specialty center designed to address the complex therapy, developmental, assistive technology and care coordination needs of children, youth, and adults with cerebral palsy and other complex conditions. Her background includes experience with cerebral palsy, neuromuscular disorders and complex conditions throughout the life span. Her experience includes the evaluation and integration of assistive technology systems including augmentative communication, computer access, and seating and positioning. She has specialty training in Kinesio® Taping, neurodevelopment treatment, and cortical visual impairment.

Erin Pope PT, MPT, is a lead physical therapist at the Perlman Center at Cincinnati Children’s Hospital Medical Center. Pope has experience and training in sensory integration, orthotics and bracing, Kinesio® Taping, assistive technology, and adaptive equipment. Her specialties include early mobility, body weight support training, and seating and positioning.

THURSDAY, JULY 23, 2015 | 5PM TO 6PM (ET)

“I Have a Product Idea!”

LESLIE JOHNSON FITZSIMMONS, PT



Have you created a prototype and successfully used it with your clients or have an idea for a product that you would like to see manufactured to help others? Then this webinar may interest you. I will give my personal accounting of the steps that I took to bring my product (the i2i) to market

as well as alternate routes that you may consider pursuing for your own ideas. Topics covered will include provisional patents, patents, nondisclosure forms, the value of establishing a Limited Liability Company (LLC), prototypes, and advice from others who now have had their products manufactured. Also a big healthy dose of encouragement! If at first you don’t succeed try, try again – I had to!!

Leslie Fitzsimmons PT, is a licensed physical therapist with more than 38 years of treatment experience working with clients from birth to geriatric in a variety of settings including hospital, rehab, school, orthopedic office, homecare and hospice. For the past 20 years, she has been a treating therapist at New Jersey Institute of Disabilities (formerly known as Lakeview School) in Edison, New Jersey. She developed a special interest in seating and adaptive equipment and received her ATP. In an effort to improve the quality of life for her clients with poor head control, she created the i2i head and neck positioning and support system, which is now manufactured by Stealth Products. She was named the ASAH 2007 Related Services Provider of the Year for the state of New Jersey. Fitzsimmons has had the pleasure of presenting throughout the U.S. and internationally about the issues related to the importance of good seating and how this affects improved head position and control.

TUESDAY, AUGUST 18, 2015 | 7PM TO 8PM (ET)

Encouraging Consumers to Become Advocates

JENN WOLFF, OTR/L



After participating in this webinar, you may want to change your wheelchair evaluations. By preparing the consumer for the evaluation (self-evaluation form, guidance on medical history), showing equipment options for inclusion in decision making, and describing the insurance process

(including why you may not be able to provide the equipment he or she chooses), you will develop well-informed consumers and create advocates who will potentially gain self-confidence and self-worth and make positive policy change that will benefit everyone. By empowering consumers, you benefit them, and you might create an extremely loyal customer base. Resources will be provided to assist you with this process.

Jenn Wolff, OTR/L, began advocating in 2010 when Medicare denied coverage of a recommended wheelchair. She became a “roller” in 2003 because of a spinal cord tumor and earned a MA in Occupational Therapy in 2005 from the College of St. Catherine. She advocates in Washington, D.C., several times a year and as manager of UsersFirst, tries to educate and motivate wheelchair users, friends and family to join the fight. She is also a board member of the Spinal Cord Injury/Disease Association of Iowa, a member of the IA Olmstead Consumer Task Force, and helps facilitate support groups for stroke, Parkinson’s and SCI/D.

THURSDAY, AUGUST 20, 2015 | 5PM - 6PM (ET)

New RESNA Standard for Postural Support Devices: What Should I Know?

SPONSORED BY BODYPOINT

KELLY WAUGH, PT, MAPT, ATP, MEMBER OF CTF



In this webinar, participants are introduced to two RESNA Standards related to postural support devices (PSDs): the RESNA WC-3 Part 1 standard on body and seating measures and a newer Part 3 standard on PSD strength testing. The selection of

the most appropriate PSD for a client should be partially dependent on the quality, design, safety and durability of the product. The new Part 3 standard, a PSD performance standard, specifies test methods that provide this important information. Utilizing the knowledge gained from both of these standards can improve outcomes for your clients, and help to elevate the level of professionalism in our field.

Kelly Waugh, PT, MAPT, ATP, is a senior instructor and the clinic coordinator at Assistive Technology Partners at the University of Colorado in Denver. She is a physical therapist with more than 30 years of experience as an educator and clinician, specializing in the areas of wheelchair seating and alternate positioning. Waugh has participated in the development of wheelchair seating standards since 1998 as a member of ISO and RESNA standards committees. She has lectured extensively on the topics of wheelchair seating assessment, standardized seating measurement, custom contoured seating and nighttime positioning, to varied audiences nationally and internationally. She received her BA in Human Biology and her MA in Physical Therapy from Stanford University in Stanford, Cali.

TUESDAY, SEPTEMBER 15, 2015 | 7PM - 8PM (ET)

Seating and Mobility for Persons with Cerebral Palsy

LAUREN ROSEN, PT, MPT, MSMS, ATP/SMS, MEMBER OF CTF



Individuals with cerebral palsy are each unique and should be treated as such. There is no "cookie cutter" seating and mobility device that is appropriate for all people with this diagnosis. There are some common issues such as spasticity, joint contractures, and decreased trunk control that individuals with cerebral palsy may experience. This course will discuss these common issues as well as seating and positioning supports that can assist in their management. Case studies with photos and videos will be used throughout to assist the attendee.

Lauren Rosen, PT, MPT, MSMS, ATP/SMS, is a physical therapist and seating and mobility specialist at St. Joseph's Children's Hospital in Tampa, Fla. She is the program coordinator for the Motion Analysis Center, a three-dimensional motion analysis lab where she also manages a pediatric and adult seating and positioning clinic. Rosen has been active in Durable Medical Equipment prescription for the past 18 years. She is on the board of directors of the Rehabilitation Engineering and Assistive Technology Society of North America. She has lectured and written articles on wheelchairs, seating and positioning, and standing.

WEDNESDAY, SEPTEMBER 16, 2015 | 11AM - 12PM (ET)

Different Strokes for Different Folks - Exploring Possibilities for Customizing a Seating System

SPONSORED BY SUNRISE MEDICAL

ANGIE KIGER, M.ED., CTRS, ATP/SMS



In the world of complex rehab, we often find ourselves faced with complicated scenarios that defy what textbook, conventional thinking, or an instruction manual would recommend we do. Having a basic understanding of the possibilities

will not only benefit your clients, but it will also help you! During this one-hour presentation, we will discuss the advantages and flexibility of standard "out of the box" seating products. We will also review components that make up a custom configured seating system and considerations that come into play when recommending the most appropriate seating system for a client.

Angie Kiger M.Ed., CTRS, ATP/SMS, is the clinical channel and education manager for Sunrise Medical. She earned a Master of Education in Assistive Technology from George Mason University in Fairfax, Va., and a certificate in assistive technology from California State University at Northridge. Kiger has worked with infants, children and adults in inpatient and outpatient settings. In addition to working as a clinician, Kiger has served as an adjunct instructor at George Mason University and presented at numerous conferences in the U.S. and abroad.

THURSDAY, SEPTEMBER 17, 2015 | 5PM - 6PM (ET)

Considerations with Drive Control Access

SPONSORED BY PRIDE MOBILITY

JAY DOHERTY, OTR, ATP/SMS



Alternative controls come with complications of their own when setting up an end-user in a power wheelchair. The evaluation team often focuses on access to the electronics for driving before considering how power positioning or other components in the seating system may affect access to the input device. This course will review the considerations that must be examined when recommending alternative controls.

With 19 years of clinical experience, Jay Doherty, OTR, ATP/SMS, has a strong understanding of seating and positioning requirements, mobility equipment, and assistive technology. Doherty worked as a therapist on a seating team for 14 years previous to working for Quantum Rehab. Now as a regional manager for Quantum Rehab, he oversees a team of rehab product specialists for Quantum Rehab's Northeast Region and presents clinical education programs throughout the country.

TUESDAY, OCTOBER 20, 2015 | 7PM - 8PM (ET)

Pressure Ulcer Etiology - What is The New Evidence Telling Us?

SPONSORED BY ROHO

W. DARREN HAMMOND, MPT, CWS



Historically, pressure ulcer etiology has revolved around ischemic changes in the skin and soft tissue. However, recent evidence has demonstrated that deformation of soft tissue has earlier implications in pressure ulcer development versus just ischemia alone. Currently, there are various levels of clinical knowledge and experience when it comes to understanding pressure ulcer etiology and appropriate management strategies. Unfortunately, most health care practitioners do not understand the pathophysiology of pressure ulcers and the extrinsic and intrinsic risks, which need to be managed for successful outcomes. This webinar will review the

current best evidence of pressure ulcer pathophysiology, with a focus on the new understanding of the significant role tissue deformation plays in the development of pressure ulcers.

W. Darren Hammond, MPT, CWS, has held clinical positions and faculty appointments in the U.S. for the past 21 years. In addition to being a board-certified Wound Care Specialist by the American Board of Wound Management, Hammond's focus of treatment has been in the rehabilitation of individuals with spinal cord injuries. Throughout his career, Hammond has had extensive experience with seating and positioning, chronic wound management, pressure mapping and cushion and wheelchair prescription. He is currently the senior director of The ROHO Institute for Education at ROHO, where he lectures nationally and internationally on the subjects of chronic wound healing, pressure imaging, and seating and positioning options.

WEDNESDAY, OCTOBER 21, 2015 | 11AM - 12PM (ET)

Arthrogyrosis -Challenges and Solutions When a "Non-Progressive" Diagnosis Progresses

KAY ELLEN KOCH, OTR/L, ATP



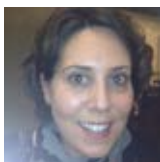
Arthrogyrosis is a neuromuscular skeletal disorder that affects various joints in the body. It is congenital and classified as "non-progressive." Mobility is limited by the joints affected as well as muscular emaciation or weakness. Intelligence is not affected, but lack of mobility and exploration can affect development. As the child grows and develops, seating, positioning and mobility challenges occur. This webinar will review this disorder, orthopedic and therapeutic considerations, as well as positioning and seating challenges. Mobility and seating options and ideas for access for independent mobility will also be presented.

Kay Koch, OTR/L, ATP, has more than 30 years seating and wheeled mobility experience. She is a graduate of the occupational therapy program at The Ohio State University in Columbus, Ohio. Her focus has been on pediatric seating and positioning, wheeled mobility, and assistive technology solutions. Koch has spent her years as an OT in various roles including clinician, manufacturer rep, educator and in accreditation. She has presented at various national and international conferences.

THURSDAY, OCTOBER 22, 2015 | 5PM - 6PM (ET)

The Quarter-Inch Quandary: Minor Adjustments Can Make a Major Difference

ROBIN SKOLSKY, PT, ATP



This course will provide participants visual comparisons on how even small adjustments can make big differences in a wheelchair user's posture, function and comfort. We will compare "off-the-shelf" components to custom and explore creative ways to use items that are readily available. Before and after photos will demonstrate some of the significant changes achieved.

Robin Skolsky, PT, ATP, graduated with a Master of Science in Physical Therapy from the University of Miami in Coral Gables,

Fla. She received her undergraduate degree from the University of Maryland, College Park, Maryland. She has worked almost 20 years as a physical therapist, and more than 10 of those has been full time in seating and mobility. Skolsky has worked in a variety of settings and with a variety of patients, from pediatrics to geriatrics. Her time is spent between Shepherd Center, Children's Healthcare of Atlanta and a students on the topic of seating and mobility and has presented at ISS. She also helped develop and implement a community "Advanced Wheelchair Skills Program" through Shepherd Center in Atlanta.

TUESDAY, NOVEMBER 10, 2015 | 7PM - 8PM (ET)

Postural Care Around the Clock

TAMARA KITTELSON-ALDRED, MS, OTR/L, ATP/SMS, PCT, MEMBER OF CTF



Twenty-four hour postural care is a powerful concept that can change lives. Have you ever watched a client's body shape become progressively distorted over time despite your best seating efforts? Well-planned and implemented postural care for people with movement limitations can improve functional outcomes and quality of life. By supporting symmetrical postures and avoiding destructive ones, a person's body shape can be protected and restored, sleep improved, and personal care made easier. Postural care should be considered for persons of all ages who require positioning and mobility equipment. Learn more about this gentle, non-invasive approach!

Tamara Kittelson-Aldred MS, OTR/L, ATP/SMS, PCT, has been an occupational therapist for 40 years. She studied 24-hour postural care in the United Kingdom and qualified in 2012 as the first American Postural Care Tutor through the UK Open College Network. Kittelson-Aldred has written and presented on this topic in the U.S. and Peru. She is principal tutor with Postural Care USA and director of Eleanore's Project, promoting postural care and responsible wheelchair provision in Peru. Kittelson-Aldred provides clinical services for positioning and mobility equipment including 24-hour postural care for children, youth and complex adults in Missoula, Mont.

WEDNESDAY, NOVEMBER 11, 2015 | 5PM - 6PM (ET)

Wheelchair Cushion Selection - How Materials and Design Impact Outcomes, Part I

ALLEN SIEKMAN



There are hundreds of wheelchair cushions on the market. Some are filled with air or fluid, some are foam, some are gel, and many use a combination of materials. There are flat cushions and cushions with pre-contoured shapes, as well as some that have components that the clinician can change to alter shape, support or pressure redistribution. The fact that there are so many cushions is great, but it does complicate the selection process for the clinician or consumer that has to decide which cushion is best for any one application. This two-part course will review the anatomy of the seated individual and explore the types of cushions and materials used in construction. The goal is to understand how the cushions work. Some types of cushions

are great for pressure management. Others are great for stability or comfort. What about heat and humidity? This course will help demystify the wide range of available cushions and make the selection process easier.

Allen Siekman has more than 38 years clinical experience as a seating specialist, designer and educator specializing in the design and provision of seating equipment for children and adults with moderate to severe physical challenges. He served 14 years as the head of the seating and mobility department at the Stanford University Rehabilitation Engineering program in Stanford, Calif. He is currently an independent consultant to large and small corporations worldwide. Siekman is the past chair of the RESNA/ISO Wheelchair Seating Standards working group and continues to present workshops and seminars on wheelchair seating to varied audiences worldwide.

THURSDAY, NOVEMBER 12, 2015 | 5PM - 6PM (ET)

Wheelchair Cushion Selection - How Materials and Design Impact Outcomes, Part 2

ALLEN SIEKMAN

There are hundreds of wheelchair cushions on the market. Some are filled with air or fluid, some are foam, some are gel, and many use a combination of materials. There are flat cushions and cushions with pre-contoured shapes, as well as some that have components that the clinician can change to alter shape, support or pressure redistribution. The fact that there are so many cushions is great, but it does complicate the selection process for the clinician or consumer that has to decide which cushion is best for any one application. This two-part course will review the anatomy of the seated individual and explore the types of cushions and materials used in construction. The goal is to understand how the cushions work. Some types of cushions are great for pressure management. Others are great for stability or comfort. What about heat and humidity? This course will help demystify the wide range of available cushions and make the selection process easier.

Allen Siekman has more than 38 years clinical experience as a seating specialist, designer and educator, specializing in the design and provision of seating equipment for children and adults with moderate to severe physical challenges. He served 14 years as the head of the seating and mobility department at the Stanford University Rehabilitation Engineering program in Stanford, Calif. He is currently an independent consultant to large and small corporations worldwide. Siekman is the Past Chair of the RESNA/ISO Wheelchair Seating Standards working group and continues to present workshops and seminars on wheelchair seating to varied audiences worldwide.

TUESDAY, DECEMBER 8, 2015 | 7PM - 8PM (ET)

Optimizing Power Mobility: Programming, Tracking, Suspension and More

SPONSORED BY PERMOBIL

AMY MORGAN, PT, ATP



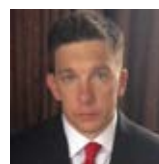
Many factors go into adjusting how a power wheelchair handles and drives. The drive wheel configuration and suspension of the base will change the way a wheelchair performs in various environments. Additionally, how that chair is programmed also has a major impact on overall performance. This webinar will discuss how base characteristics and programming adjustments impact the way a power wheelchair drives. We will also review various tracking technologies and their impact on power wheelchair driving. Finally, ongoing training strategies and tools will be discussed to help clients continue to optimize their driving skills.

Amy Morgan PT, ATP, has been involved in wheelchair seating from the beginning of her career as a physical therapist. She worked for Cincinnati Children's Hospital in Cincinnati, where she was involved in both outpatient and inpatient settings. This experience allowed her to work with a variety of patient populations. Additionally, Morgan was the lead therapist in the wheelchair clinic, which included evaluation for equipment as well as power mobility training for young children. She has presented lectures nationally and internationally. Morgan is currently the national clinical education manager for Permobil, Inc. and is an active member of RESNA and APTA (Pediatrics and Neurology Section Member).

THURSDAY, DECEMBER 10, 2015 | 5PM - 6PM (ET)

Maximizing the Functional Potential of Manual Wheelchair Users: Translating Research into Daily Practice

IAN RICE, PHD, MS, OT



Manual wheelchair prescription and selection can be a daunting task with the ever-changing needs of the active end user. The purpose of this webinar is to translate physical activity and biomechanical research to identify best practices to assist health care professionals in making technology selection decisions. Additionally, the real-life experiences of long-term active wheelchair users will be incorporated.

Ian M. Rice, Ph.D., MS, OT, is an assistant professor in the Department of Kinesiology and Community Health Sciences, at the University of Illinois, Urbana Champaign. Rice earned his PhD from the University of Pittsburgh in 2010 in rehabilitation science and technology with a focus on biomechanics. His research interests include the study of interventional and adaptive technologies to promote injury prevention, physical activity, and full-life participation in persons with mobility limitations. Rice has a particular interest in combining motor learning theory, motor control and ergonomic principles to optimize the match between person and mobility device.

2015 NRRTS
WEBINARS

TO REGISTER, VISIT

WWW.NRRTS.ORG/WEBINARS